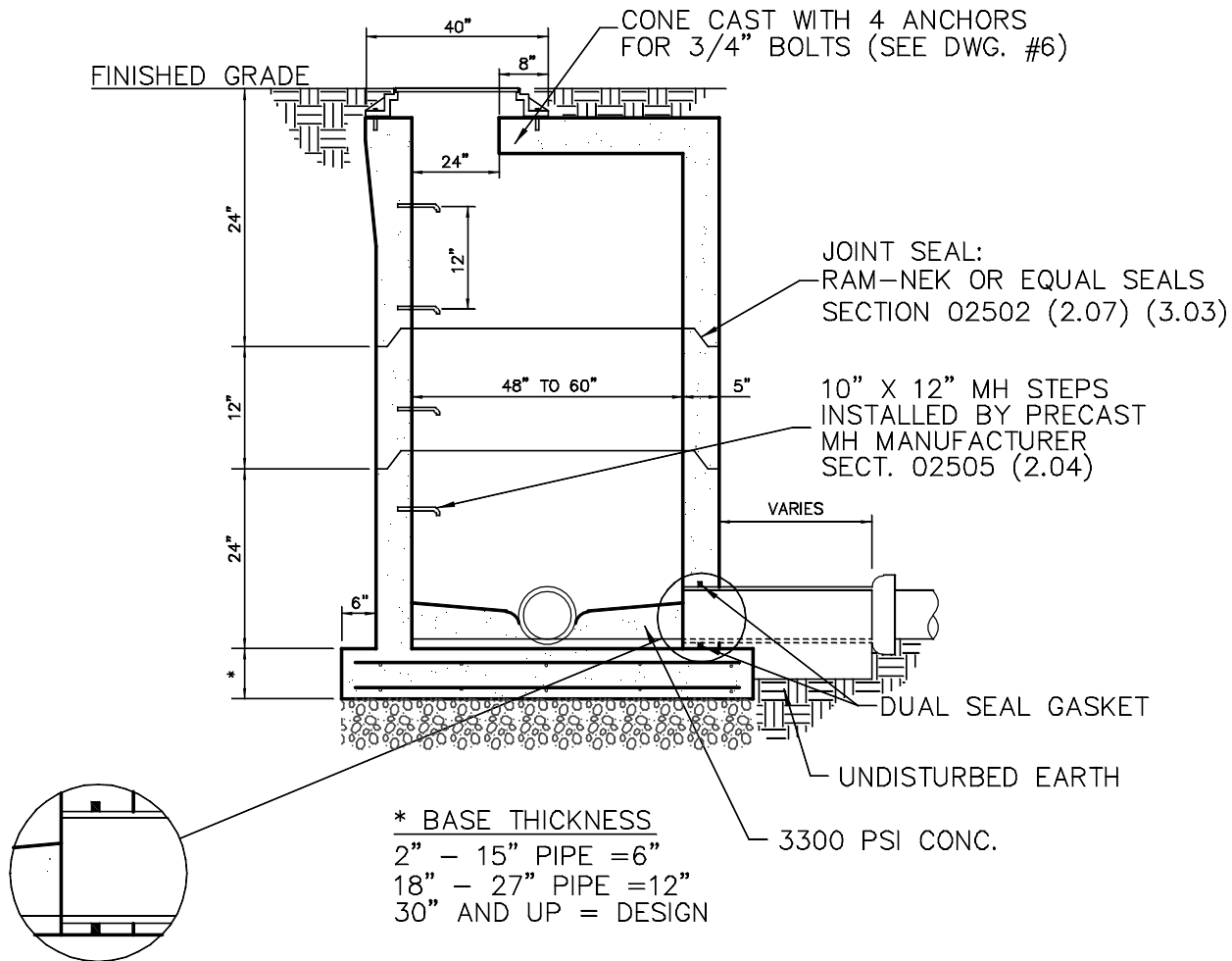


NOTES:

1. SEE SECTION 02605 OF THE SPECIFICATION.
2. MANHOLE SHALL CONFORM TO ASTM C-478.
3. THE ENTIRE OUTER SURFACE OF MANHOLE SHALL BE COATED WITH 2 COATS BITUMASTIC.
4. REFER TO DWG. #1 FOR PLAN VIEW.



A-LOK GASKET WATERSTOP PER ASTM C923 CAST INTEGRALLY IN MANHOLE WALL JOINT ALLOWS 10" OMNIDIRECTIONAL DEFLECTION SECTION 02505 (2.06)

FLAT TOP MANHOLE

MANHOLE FRAME AND COVER SHALL CONFORM TO SECTION 02505 (2.13) MANHOLE FRAMES AND COVERS. WATERTIGHT COVERS SHALL BE USED IF REQUIRED BY THE AUTHORITY.

FLAT TOP MANHOLE
(OVER 15 FEET)

**SPRING - BENNER - WALKER
JOINT AUTHORITY**

DATE
4/05
SCALE
NTS
PROJECT
SHEET
5