

ADJUST TO FINISHED GRADE WITH APPROVED RUBBER EXTENSION RINGS, MAXIMUM 12". UTILIZE ADHESIVE BETWEEN EXTENSION RINGS. INSTALL RAM-NEK PLASTIC GASKET BETWEEN BOTTOM RING AND PRECAST TOP SECTION AND BETWEEN TOP RING AND MANHOLE FRAME.

STEP HANDGRAB

SEE DETAIL "C"

JOINTS SEALED WATERTIGHT WITH DOUBLE RAM-NEK PLASTIC GASKETS

PRECAST CONCRETE RISER SECTION

CAST-IN-PLACE FLEXIBLE SLEEVE OR GASKET

SEWER AS PER PLAN

CRUSHED AGGREGATE STONE WELL COMPACTED

2'-0"

STANDARD MANHOLE FRAME AND COVER

FINISH GRADE

6'-0"

GRATING HANGER HOOK

1/2 DEPTH  
8' MINIMUM

4'-3"

GRATING PLATFORM

2'-6"

MANHOLE STEPS

PRECAST REINFORCED CONCRETE RISER SECTION WALL THICKNESS 6" FOR 6'-0" DIA. MANHOLE

SEE DETAIL "B"

12"

CONCRETE CHANNEL TO BE FORMED AND POURED IN PLACE OR PRECAST

1/2 DEPTH

SEWER

PRECAST CONCRETE BASE

4" MIN.

UNDISTURBED EARTH

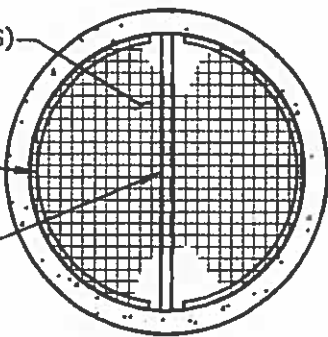
8"

### TYPICAL MANHOLE WITH PLATFORM

1 1/2" ALUMINUM GRATING (2-PIECES)

ALUMINUM L2"x2"x1/4"

ALUMINUM L3"x3"x5/16"



#### SECTION "A"

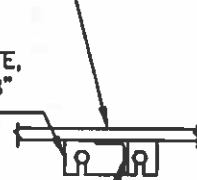
#### GRATING PLATFORM PLAN

NOT TO SCALE

1 1/2" ALUMINUM GRATING

1/4"x3"x8" ALUMINUM PLATE, SLOTS FOR 5/8" ANCHOR BOLTS

ALUMINUM L3"x3"x5/16", SHOP WELD TO 1/4" PLATE



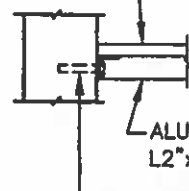
#### DETAIL "B"

NOT TO SCALE

1 1/2" ALUMINUM GRATING

ALUMINUM L2"x2"x1/4"

5/8" STAINLESS STEEL BOLTS AT 12" CC



#### DETAIL "C"

NOT TO SCALE

DEEP MANHOLE WITH PLATFORM (OVER 15 FEET)

SPRING - BENNER - WALKER JOINT AUTHORITY

DATE 10/19/21

SCALE NTS

PROJECT

SHEET 26