

ADJUST TO FINISHED GRADE WITH APPROVED RUBBER EXTENSION RINGS, MAXIMUM 12". UTILIZE ADHESIVE BETWEEN EXTENSION RINGS. INSTALL RAM-NEK PLASTIC GASKET BETWEEN BOTTOM RING AND PRECAST TOP SECTION AND BETWEEN TOP RING AND MANHOLE FRAME.

JOINTS SEALED WATERTIGHT WITH DOUBLE RAM-NEK PLASTIC GASKETS

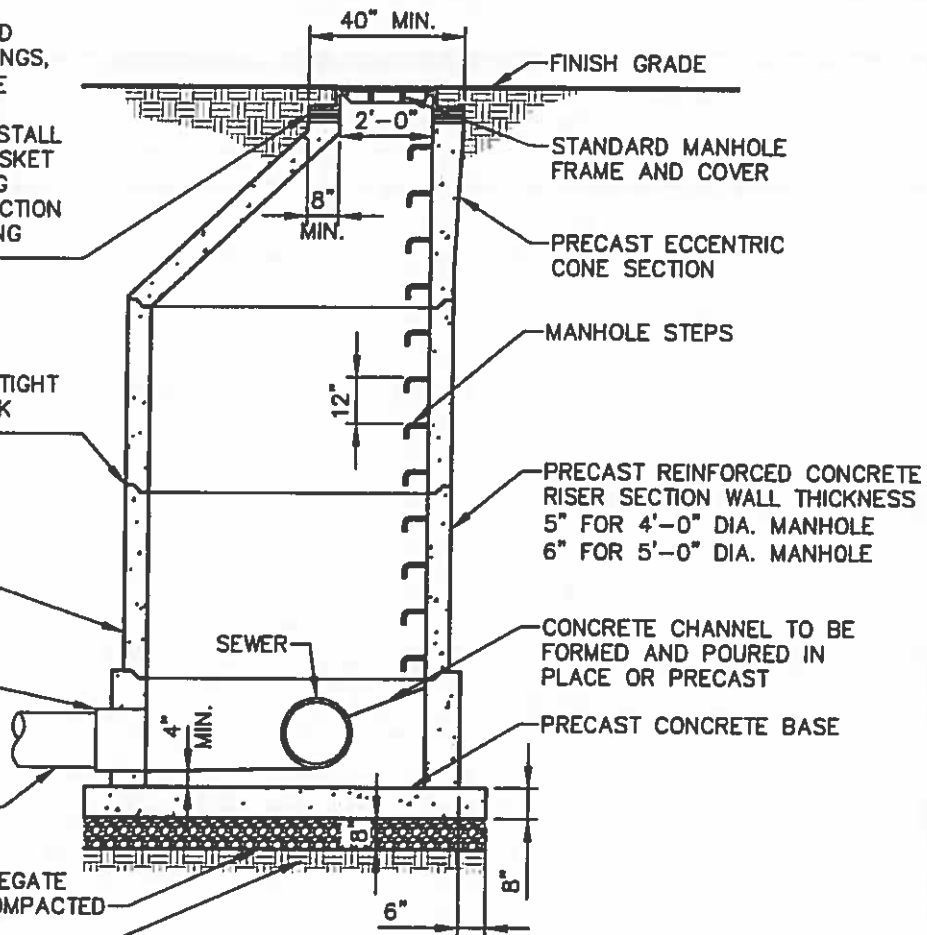
PRECAST CONCRETE RISER SECTION

CAST-IN-PLACE FLEXIBLE SLEEVE OR GASKET

SEWER AS PER PLAN

CRUSHED AGGREGATE STONE WELL COMPACTED

UNDISTURBED EARTH



SANITARY SEWER MANHOLE

NOT TO SCALE

NOTES:

1. SEE SECTION 02605 OF THE SPECIFICATIONS.
2. MANHOLES SHALL CONFORM TO ASTM C-478.
3. THE ENTIRE OUTER SURFACE OF THE MANHOLE SHALL BE COATED WITH 3 COATS BITUMASTIC.
4. MANHOLE FRAME AND COVER SHALL CONFORM TO SECTION 02605.
5. WATERTIGHT COVERS SHALL BE USED IF REQUIRED.
6. MANHOLE SECTION HEIGHTS SHALL BE APPROVED BY AUTHORITY.

MANHOLE

SPRING - BENNER - WALKER
JOINT AUTHORITY

DATE
11/5/21

SCALE
NTS

PROJECT

SHEET
2