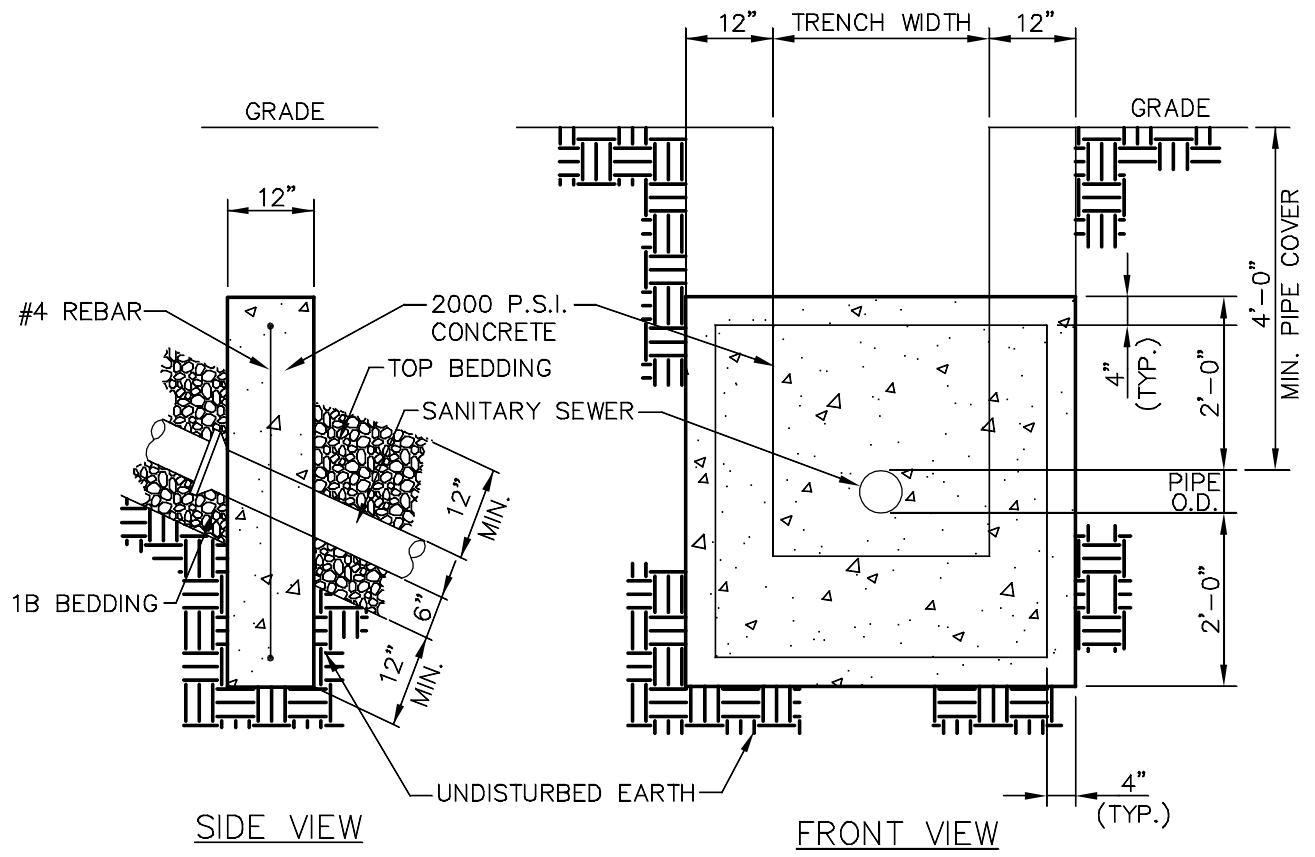


SLOPE	SPACING
UNDER 20%	© AUTHORITIES DISCRETION
20% TO 35%	36'-39'
35% TO 50%	24'-26'
50% AND OVER	13'-16'

**NOTE:**

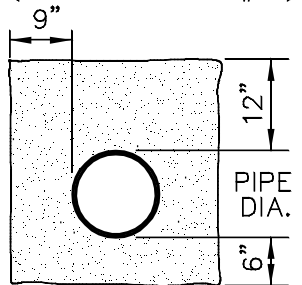
ANCHOR WIDTH INCLUDES A 12" NOTCH INTO UNDISTURBED EARTH ON BOTH SIDES.



**CONCRETE ANCHOR DETAIL**

NOT TO SCALE

(REFER TO DWG. #15)



AGGREGATE BEDDING FOR LATERALS  
(SECTION 02225)

CONCRETE THRUST ANCHOR

**SPRING - BENNER - WALKER  
JOINT AUTHORITY**

DATE	4/05
SCALE	NTS
PROJECT	
SHEET	18